

## C-AP 000 Maximising Benefits Of the *CADTERNS* LV

*CADTERNS*® Fit-first System™ of personal patternmaking is built upon effective use of personal Ready-to-Style slopers – fitted basic, unstyled apparel patterns.

The **LV** (Limited Version) provides a “try before you buy” look at *CADTERNS*’ personal patternmaking functions with three specific limitations:

- . Slopers that you create and preview can not be saved.
- Other *CADTERNS* slopers from other sources cannot be opened.
- One sloper, scaled to fit on 1 page is provided for a printer compatibility test.

This demo **LV** is based on *CADTERNS* **Pro** version so that you can test suitability for your needs and preferences by trying functions available in both the **Lite** and **Pro** versions. To compare each of the versions **LV**, **Lite** and **Pro** see [Benefits & Features](#).

## What You Can Do Using This **LV**

### 1. Take the Tour

At the bottom of the home page as well as every other page included in the tour, you will find a button to take you on a tour of [www.cadterns.com](http://www.cadterns.com). You may wish to *print the table* that appears at the beginning to use as an introduction to the slides or to return to a specific one after the tour is done.



To return to this table at any time, go to the *CADTERNS* homepage and click the “Take the Tour” button at the bottom of the page. The page that you will see next is the table of introductions and links to specific pages.

Gradually the tour will take you through all of the *CADTERNS* features. To know which features are included with each of the 3 versions - **LV**, **Lite** and **Pro**, download the table of [Features and Benefits](#).

To leave the tour at any time, select File and choose Close.

### 2. Try the Program

Try *CADTERNS* to see for yourself how instant and easy it is.

The first thing you will see is a new file ready and waiting to accept your inputs.

#### Screen 1 - Sloper Definition Folder

Enter specific selections and information to create a new sloper. Please note that weight is an *optional* entry, useful for future reference regarding measurements at an earlier date and/or a different weight.

#### Screen 2 - Measurements Folder (Optional)

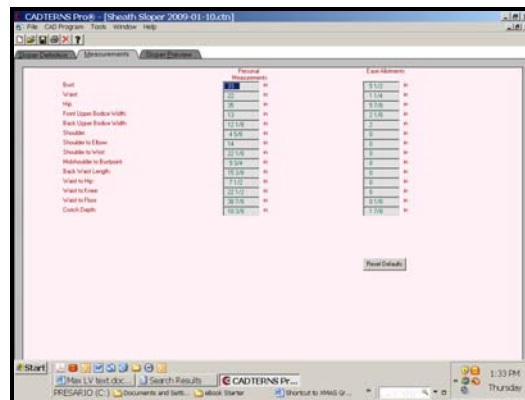
When The Measurements page appears, it is already filled with calculations based on your 1<sup>st</sup> 4 measurements – height, bust, waist and hip plus the ease description that you chose on Screen 1 (Definition).

In the measurement folder, you have several options:

- Accept the measurements that were calculated for you
- Measure your figure at the described locations and replace the default numbers with our own.
  - Check illustrations of taking [measurements](#) for calculating *CADTERNS* slopers and classic patterns
  - Change measurements that differ by 1 cm (1/2") or more.
- Type the amounts that you prefer, replacing the default numbers.
- Modify ease allotments if you would like different amounts.

Once you are comfortable with your *CADTERNS* [settings](#), personal [measurements](#) and [ease](#) values, it is unnecessary to view the Measurements page every time. You can go directly from the Sloper Definition screen to the Sloper Preview.

While using the LV, this shortcut applies to the current session only.

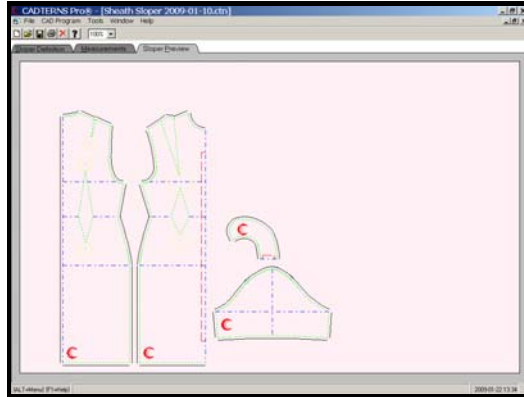


Using either the Lite or Pro version, once you have saved your measurements, you can

- Review and update measurements after significant (more or less than 10%) weight change;
- Change Ease allotments when suitable for a special project;
- Skip the Measurement folder, going directly to the Sloper Preview.

### Screen 3 – Sloper Preview Folder

*CADTERNS* calculates all of the variables entered to draft the sloper as defined and personalised by you. Check the Preview screen for a rough drawing of the sloper generated, ready to print.



Using either the Lite or Pro version, this is when you would save the sloper pattern and print it.

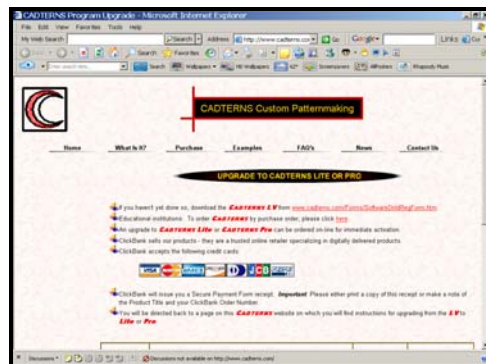
### 3. Upgrade this LV to *CADTERNS Lite* or *CADTERNS Pro*

To upgrade quickly and easily:

- Go to the Tools menu
- Select Upgrade

You will be taken to the upgrade page at [www.cadterns.com](http://www.cadterns.com)

- Follow the instructions that appear on-line.



The upgrade will be completed on-line through ClickBank using an uncomplicated, secure payment form. As you will see, they accept a large range of credit cards.

If you have enjoyed this LV, (or not) we would love to hear back from you. Send any comments or questions to [info@cadterns.com](mailto:info@cadterns.com). Thank you for trying *CADTERNS*, we look forward to adding you to our list of users.

(You might be glad to know that while we are restructuring the Website at [www.cadterns.com](http://www.cadterns.com), the program prices are drastically low. They will return to normal when the Website has been completed – which could be anytime, without notice.)