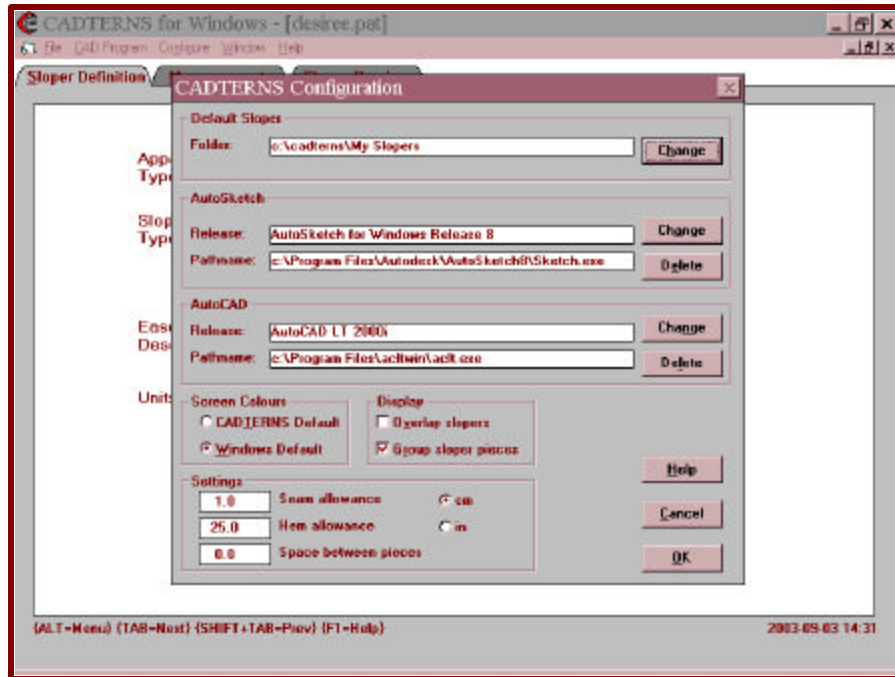


04 DRESSFORM SCREEN PRINTS & DETAILS

Miniature dressforms can help to establish a couturier atmosphere in a classroom, a studio, a store or a sewing room. One of the things this atmosphere inspires is testing styles and designs in disposable material first. Many common things such as (but not limited to) fabric scraps, paper or plastic bags and cheesecloth can provide a generous variety of weights and textures and can enable a fashion artist to experiment with various materials before cutting and sewing a project.

1. Modify configuration settings to be suitable for a dressform. Notice the variables on the lower portion of the screen particularly.



- **SCREEN COLOURS :**

Set colours to Windows Default in order to print each of the screens on a white background. An excellent way to document projects is to include a printout of CADTERNs screens.

- **SETTINGS:**

- Set seam allowances to your preferred size.
- Set the hem allowance (optional) at the height of base that you prefer.
- Adding a base has both fun and practical side benefits.
- Set space between pieces at 0, eliminating the need to join at side seam.

2. Define the sloper as a Sheath with Precise Ease.

- Complete other personal choices and variables including the First Four measurements.

In most cases, these are the only measurements needed for a dressform.

The screenshot shows the 'CADTERNS for Windows - [desiree.pat]' window with the 'Sloper Definition' dialog box open. The 'Measurements' tab is selected. The dialog contains the following fields and options:

- Apparel Type:** Womenswear (selected), Menswear
- Sloper Type:** Skirt, Pant, Bodice, Blouse, Sheath (selected)
- Ease Description:** Precise (selected), Close, Gentle
- Units:** in, cm
- User's Name:** Desiree D2W
- Height:** 173.0 cm
- Bust:** 81.0 cm
- Waist:** 61.0 cm
- Hip:** 86 cm
- Weight (Opt.):** 56.8 kg
- Date Created:** 2003-07-27

At the bottom of the dialog, there are keyboard shortcuts: {ALT+Menu} {TAB=Next} {SHIFT+TAB=Prev} {F1=Help} and a timestamp: 2003-09-03 14:41.

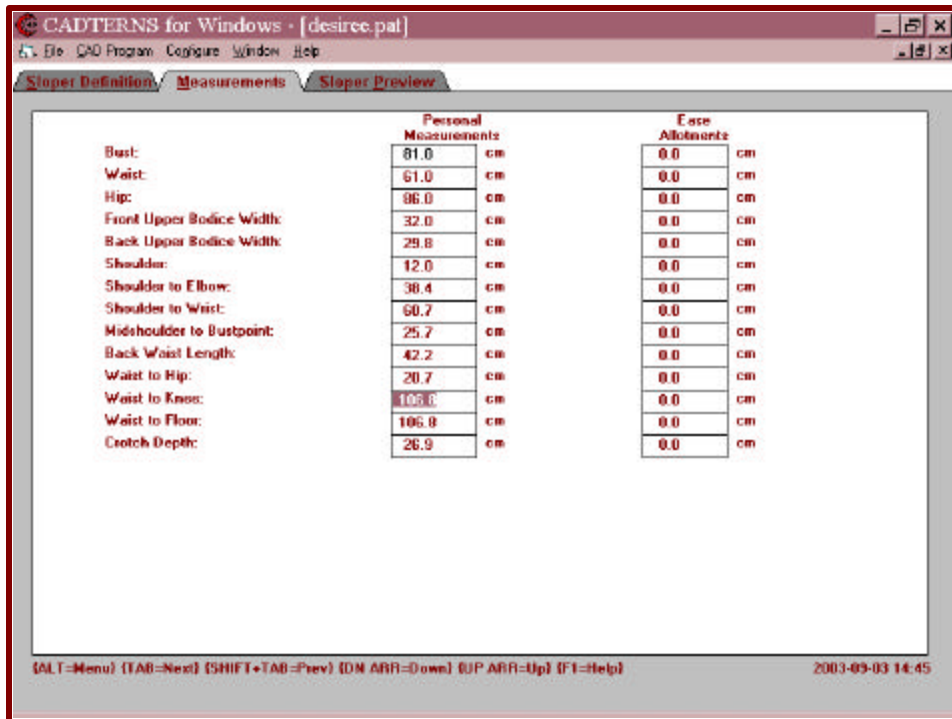
To take personal screen printouts as on the pages in this document, select Print by typing Ctrl+P then select the screens to print from the options listed. For example, if you want to check your measurement with the CADTERNS default measurements, enter Ctrl+P then select Measurements. If you have not made changes, the default measurements print. If you have made changes, the new measurement page prints out.

The screenshot shows the 'Print' dialog box with the following options:

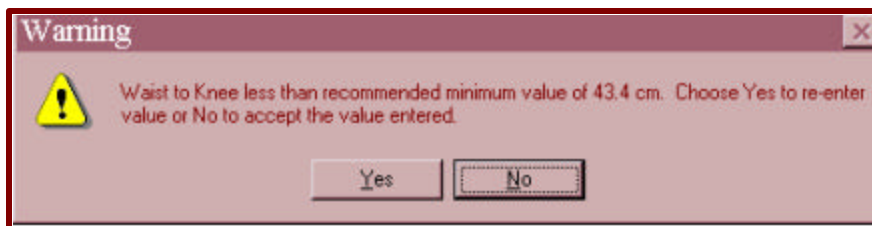
- Printer:** Canon S750 on USBPRN01
- Print What?**
 - Sloper Definition
 - Measurements
 - Sloper Preview
- Buttons:** Setup..., Test..., Help, Cancel, OK
- Pattern Preview Print Scale?**
 - Full scale
 - Half scale
 - Quarter scale
 - Eighth scale
 - Fit to single sheet
- Sheet Range:**
 - All
 - Sheets:
 - From: [] []
 - To: [] []

3. Copy [waist to floor] measurement in [waist to knee] box.

This modification is for a floor length skirt or sheath. Styling a sloper is usually done by adjusting ease allotments only, This enables you to leave your personal measurements intact until your figure does actually change. Changing this measurement on the measurement page should be a very *rare exception*. If you expect to do it repeatedly, save it by a special name such as Dressforms or Sheath – Floor Length.

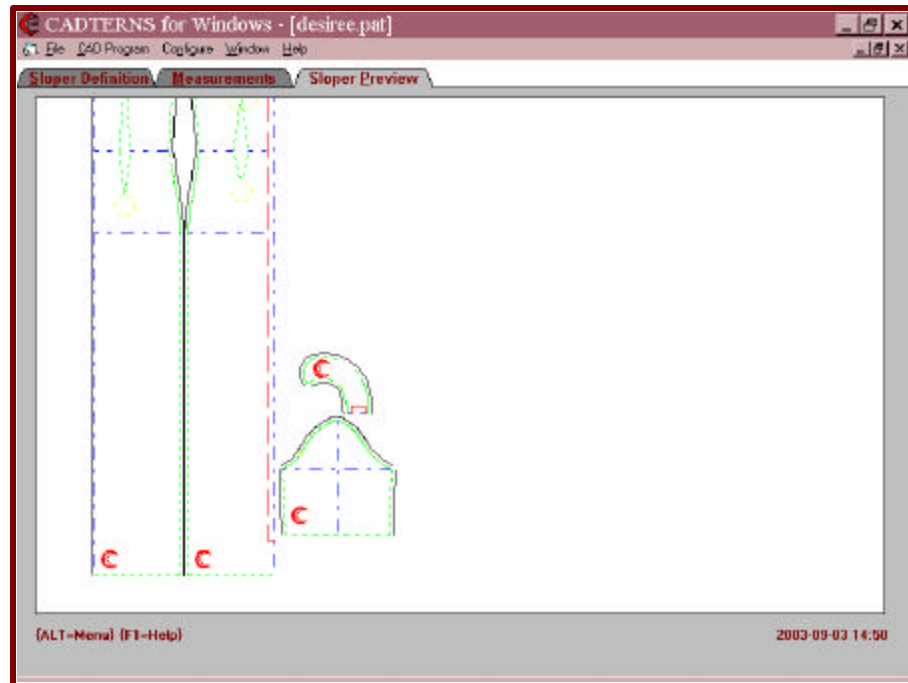


This drastic change to your measurement file raises an alert making sure that you intended it and didn't simply enter a typo. Cancel the warning message by selecting NO.



4. Preview and save the sloper calculated.

If the length of the sloper exceeds the length of the preview screen display, it will show only a portion of the sloper or pattern.



Even though the Sloper Preview is incomplete, both the printout and the export to CAD will be complete. If you choose to test the printout, press Ctrl+P and choose the default FIT TO SINGLE SHEET scale.

A copy of the sloper prints with all pieces on a single page..

5. Print or plot two copies of the quarter-scale dressform.

Note: If you wish to reinforce the sloper pattern with heavy paper such as craft paper or wallpaper, do so before cutting.

- Cut and set aside or discard the collar and sleeve pattern pieces.
- Cut along the outer edges of the combined front & back.
- Cut and close darts
 - Cut one side of darts only.
 - Clip other side from cut edge to intersection.
 - Underlay one side to make seamlines overlap.
 - Glue or tape closed.
- Mirror the two dressform pieces to create a full pattern.
 - Place pattern pieces seamline to seamline along Centre Front.
 - Reinforce the new lengthwise join line in the crosswise direction to stabilise the join.
- Working with one printed and one unprinted half of the dressform, join the two sections by overlapping seam allowances. This will position one seamline directly on top of the other, similar to sewing with felted fabric or leather.
- Glue or tape closed.
- Align shoulder seamlines and tape or glue similarly.

6. (Optional, using CADTERNS Pro) Export dressform to CAD program.

- Rearrange text containing valuable patternmaking information such as date, measurements used, etc
- Add personal touches such as annotations or identification marks.
- Store dressform with corresponding styled patterns

Note: If using a different CAD program, open it and import the dressform from CADTERNS. At the File, Open command, navigate back to CADTERNS for the project DXF file.

Use quarter-scale dressforms to test quarter-scale patterns for new styles and experiments before cutting and sewing them. Fabric scraps, plastic sheets, paper and other findings can provide a generous variety of weights and textures.

In the full-scale project, these elements of design are replaced with similar elements in the fabric used. Just as weight, texture and color decisions are part of every sewing project, so too anyone who makes these decisions regularly is undeniably a designer.

Quarter-scale dressforms are useful tools for both designers and patternmakers.