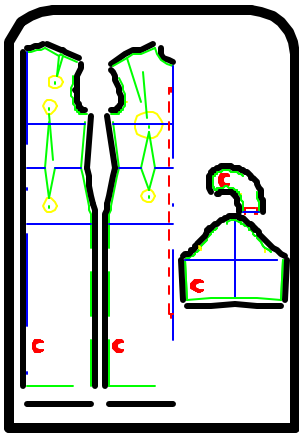
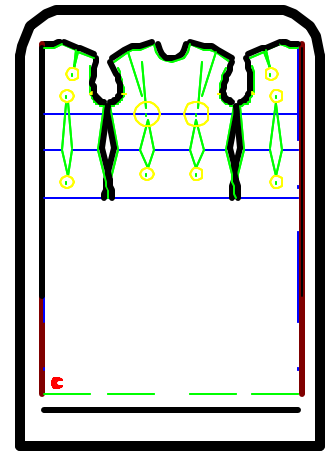


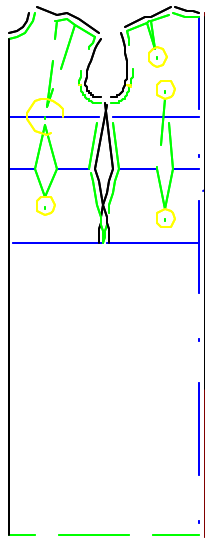
# Metamorphosis of a Personal Dressform



① Start



Finish



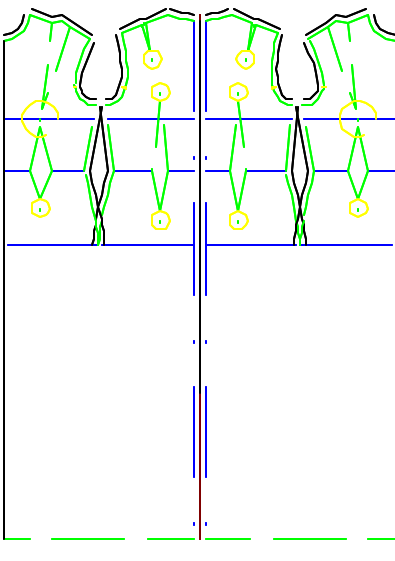
1. Remove the unnecessary.

## DRESSFORM

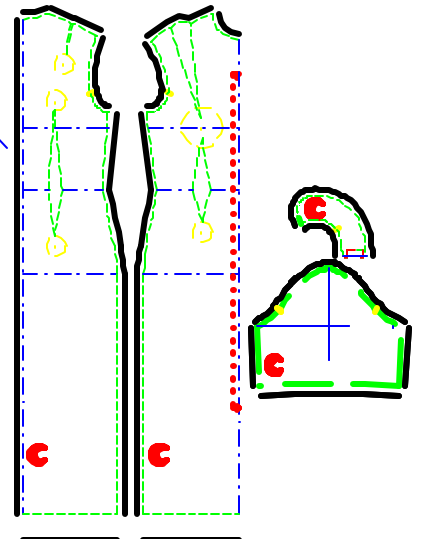
Start with Full length, Precise Cut Sheath.

1. Remove collar, sleeve, SS hip=>floor.
2. Move front SS@hip to back SS@hip
3. Mirror along Centre Front to complete.
4. Remove Centre Front markings.

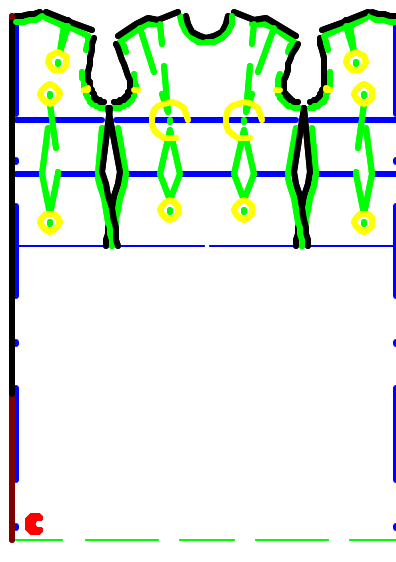
2. Join front & back.



3. Mirror for full pattern.



Start.



5. Finish